

# OJ Drives®



## OJ DV GEN II with Local User Interface

- 1.5 - 15 kW / 2.0 - 20.0 Hp
- 380 - 480 V three phase supply
- IM, PMSM, PMsynRM motor
- Ignition-protected
- 2" color touchscreen
- CE, UL, CSA
- Ambient temperature up to +70°C/+158°F

### OJ DV GEN II series

OJ DV GEN II is the upgraded version of our series of dedicated drives for ventilation applications. GEN II drives are fully backwards compatible with the corresponding power variants, which have the exact same mechanical dimensions and the same Modbus and BACnet protocols. GEN II drives offer excellent possibilities for customization.

### Design

The flexible installation design lets you mount the drive inside or outside the airflow. OJ DV GEN II is suitable for any system, as it can be configured specifically for your application. Adding option modules and mounting a cooling fan on the OJ DV GEN II further expands the drives' potential.

The OJ DV GEN II removable front cover design allows easy access to the connection compartment and ample space for connecting the option module cables. The cover also facilitates safe mounting on the aluminum frame, ensuring the desired sealing grade.

### Local User Interface

The built-in 2" touchscreen with color display lets users carry out basic set-up and local operation. The intuitive interface also gives access to readouts of a wide range of information. All this facilitates easy troubleshooting and swift responses to alarms.

### Control




The OJ DV GEN II can be controlled using a 0–10V or a 4–20mA signal and through Modbus RTU or BACnet MS/TP. In addition, the digital input and output interfaces can be used to configure the control method.

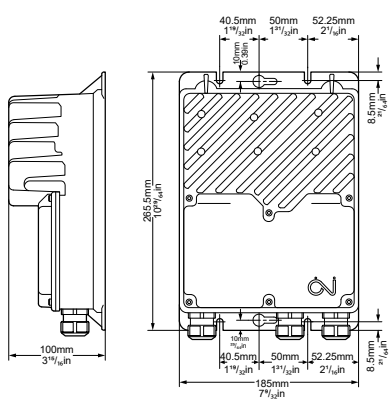
### Grid immunity

Over Voltage Detection enables these robust drives to cope with most types of grids worldwide, handling disturbances such as notches, spikes and transients.

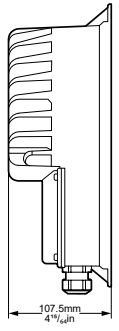
### Built-in EMC filter

The OJ DV GEN II series comes with a fully integrated EMC filter, meeting the emissions and immunity norms for industrial and residential areas according to EN 61800-3 (C1 and C2) and FCC §47 part 15 B. and ICES-003.

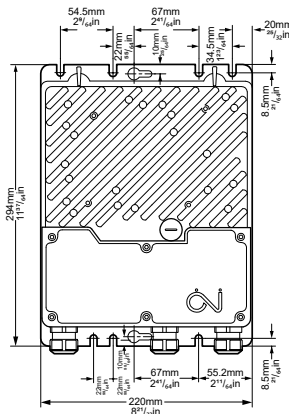
	Type	DV-3015 -xxLx	DV-3024 -xxLx	DV-3030 -xxLx	DV-3040 -xxLx	DV-3055 -xxLx	DV-3065 -xxLx	DV-3075 -xxLx	DV-3110-xxLx	DV-3150 -xxLx
Frame size		H3			H4				H5	
Power size	kW	1.5	2.4	3.0	4.0	5.5	6.5	7.5	11	15
Horsepower 380-480V supply	Hp	2.0	3.2	4.0	5.5	7.5	8.7	10.0	15.0	20.0
Horsepower 208-240V supply	Hp	1.2	1.9	2.3	3.1	4.3	5.0	5.8	8.5	11.6
Efficiency	%	> 96.5%			> 96.5%				> 97.5%	
<b>Power supply</b>										
Voltage	VAC	3 x 208 - 240 V AC 50/60 Hz +/-10% *1 3 x 380 - 480 V AC 50/60 Hz +/-10%								
Supply current at max. load at nominal supply voltage (208-380/480 V) @+50°C/+122°F	A	3.2	5.0	6.3	8.4	11.5	13.6	15.7	23.0	30.0 *4
Supply current at max. load at nominal supply voltage (208-380/480 V) @+60°C/+140°F *6	A	3.2	5.0	6.3	8.4	11.5	13.6 *4	15.7 *4	23.0	23.0
Supply current at max. load at nominal supply voltage (208-380/480 V) @+65°C/+149°F *6	A	3.2	5.0	5.0	8.4	11.5	11.5	-	23.0 *4	23.0 *4
Supply current at max. load at nominal supply voltage (208-380/480 V) @+70°C/+158°F *6	A	3.2	4.0	-	8.4	11.5	11.5	-	20.0 *4	-
Power factor (cos-phi) at max. load		> 0.9								
<b>Motor output</b>										
Nominal motor power (on shaft) *2	kW	1.5	2.4	3.0	4.0	5.5	6.5	7.5	11	15
Frequency	Hz	AC motor: 0-120   PM motor: 0-595								
Max. output voltage	Vrms	3 x 0 - 0.9 x Vin								
Max. output current 208-480 V @+50°C/+122°F	Arms	4.0	5.6	7.2	9.5	12.0	14.5	16.4	24.0	32.5 *4
Max. output current 208-480 V @+60°C/+140°F *6	Arms	4.0	5.6	7.2	9.5	12.0	14.5 *4	16.4 *4	24.0	29.0
Max. output current 208-480 V @+65°C/+149°F *6	Arms	4.0	5.6	6.8	9.5	12.0	14.0	-	24.0	29.0 *4
Max. output current 208-480 V @+70°C/+158°F *6	Arms	4.0	5.6	-	9.5	12.0	14.0	-	24.0 *4	-
<b>Protection</b>										
Max. fuse	A	16							32	
Short circuit capacity	A	5000								
Motor output		Short-circuit protected between phases, Current and temperature overload protection, Thermal Memory Retention								
Max over-voltage		<565 V								
<b>Environment</b>										
Operating temperature	°C/°F	-40°C to +50°C / -40°F to +122°F (Up to +70°C / +158°F depending on variant, see above)								
Storage temperature	°C/°F	-40°C to +70°C / -40°F to +158°F								
Protection rating		IP 54 & 65 / NEMA 4x								
Enclosure material		Aluminium								
Front cover		Plastic (Black front cover is UV resistant)								
Weight	kg/lbs	3.0 kg / 6.6 lbs				3.9 kg / 8.6 lbs			9.5 kg / 20.9 lbs	
Humidity	% rh	10-95% rh, non-condensing								
Surface		Corrosion resistant according to EN/ISO 9223 Class 4								
Air flow / cooling		Turbulent air speed of min. 3 m/s or 9.84 ft/s to achieve max. output power at max. ambient temperature. Turbulent air speed below 3m/s or 9.84 ft/s and higher ambient temperature might lead to reduced output power. (3 m/s or 9.8 4 ft/s turbulent air speed is equivalent to 6.5 m/s or 21.32 ft/s laminar air speed)								
<b>Interfaces</b>										
Field bus		Modbus RTU , BACnet MS/TP								
Analogue Inputs		1 input: 0-10 V DC or 4-20 mA or PWM								
Analogue Output		1 output: +10 V DC or +24 V DC								
Digital Inputs		2 inputs: Internal pull-up to +24 V DC								
Digital Output		1 output: Open collector, Internal pullup to +10 V DC or +24 V DC								
Status LED		Green/yellow/red								
User Interface		2 inch color resistive touch								
<b>Features</b>										
Technology		Sinusoidal back-EMF signal controlled via FOC (Field Oriented Control)								
Software updating		Yes, via serial interface								
Motor parameters		Preprogrammed by OJ or on-site configuration								
Integrated EMC filters		Yes, C1 and C2								
<b>Approvals</b>										
EMC		EN/BS 61800-3 (C1 & C2) / FCC §47 part 15 B. and ICES-003								
LVD		EN/BS 61800-5-1 / UL 61800-5-1								
Product standard		IEC/BS 61800 Part 2								
North America *3		UL-61800-5-1 / CS22.2 No. 274								
Ignition-protected components		IEC/UL60335-2-40, cl.22.116 & cl.22.117 / UL 121201 Class1, Div2. *5								
Overvoltage category		III								
Pollution degree		2								
Altitude		1.000 m / 3.280 ft: Without derating and 2.000 m / 6.560 ft: With 1% derating per 100 meter/328 ft. above 1000 meter / 3280 ft.								
Supply earthing system		TN / TT								
RoHS Directive		Yes								
Product approvals		 /   								
Note: Data are valid at: nominal supply voltage, +25°C or +77°F and sufficient air flow *1: At 3 x 230 V supply the output power is derated to 58% *2: Motor Power Factor = 0.8 and efficiency = 90% *3: Only available with black front cover *4: Reduced when with cooling fan *5: max. +50°C/+122°F ambient temp. *6: Special part number										



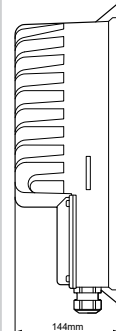
BR1014A51a



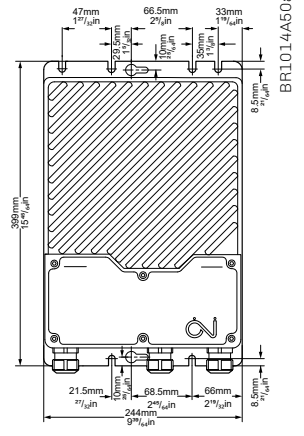
Dimensions H4



BR1014A52b

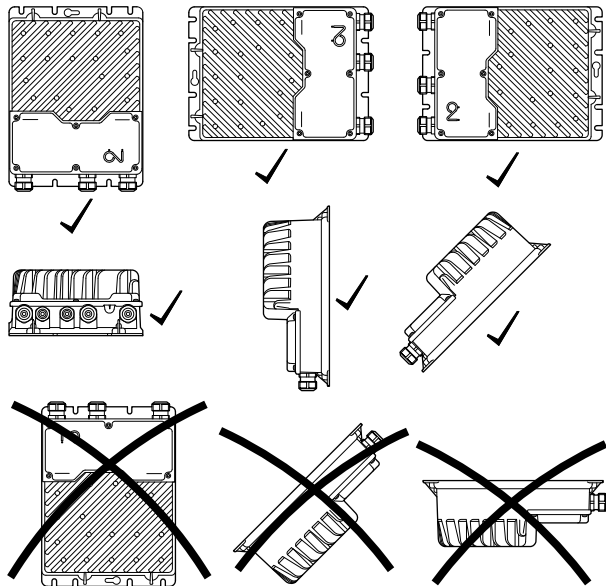


Dimensions H5



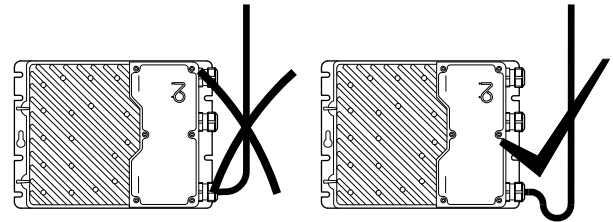
BR1014A50a

Dimensions H3



Correct mounting

BR1014A55a



Correct mounting

BR1014A56a